

"CONCOURSE QUALITY, HOBBYIST PRICE"



www.martiauto.com
13238 W Butler Drive
El Mirage, AZ 85335
Phone (623) 935-2558
Fax (623) 935-2579

DELUXE MARTI REPORT



Proud to display this symbol

Copyright Kevin Marti 2021

Thank you for your interest in our services. We have determined the following information for your vehicle from the Ford Database we have:

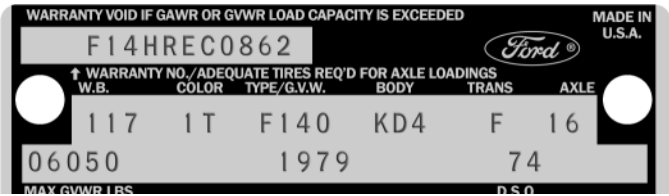
12345678901234567890123456789012345678901234567890123456789012345678901234567890
F14HREC08621171T4KD0 1 03A385Z HLKM2 MF16 35 6 3 5 74E201 6A

DOOR DATA PLATE INFORMATION

Serial Number **F14HREC0862**

F14 F-150 4x4 Regular Pickup Truck
H 351-2V Engine
R Built at San Jose
EC0862 Serial Number of this Ford Truck scheduled for production at San Jose

117 Wheelbase (inches)
1T Maroon Metallic Paint, Ford #5433-A with Candyapple Red Paint, Ford #2008-A
F140 F-150 4X4 Regular Pickup Truck 6050 Lb. GVW
KD4 Red Cloth/Vinyl Ranger XLT Lariat Bench Seat / Styleside
F 4-Speed Warner Manual Transmission
16 3.50 Conventional Rear Axle
06050 Gross Vehicle Weight in Pounds
1979 Model Year
74 Seattle DSO (District Sales Office)



IMPORTANT DATES

ORDER RECEIVED: 11/17/78
CAR SERIALIZED: 12/08/78
BUCKED: 12/16/78
SCHEDULED FOR BUILD: 01/03/79
ACTUALLY BUILT: 12/18/78
RELEASED: 12/20/78
SOLD: 02/22/79

STATISTICS

Your vehicle was one of:

- 223 With these Paint Codes
- 26 With these Paint/Trim Codes
- 21,395 With these Engine/Transmission Codes
- 5,224 Ordered from this DSO
- 7,987 With Ranger XLT Lariat Package

For the 1979 F-150 4x4 Regular Pickup Truck

ORDER TYPE: RETAIL
DSO ITEM #: 385Z
DEALER #: 74E201
WENDLE FORD SALES INC
4727 DIVISION ST
SPOKANE WA 99204

Your vehicle was equipped with the following features:

- Ammeter and Oil Pressure Gauges
- Reduced Noise Exhaust System
- Sliding Rear Window
- L78x15-B Black Sidewall Tires
- Tinted Glass
- Heavy Duty 68 Amp Battery
- Heavy Duty Rear Shocks
- Quad Front Shocks
- Ranger XLT Lariat Package

Your vehicle was actually produced on December 18, 1978 -- sixteen days ahead of schedule.

Kevin Marti