

"CONCOURSE QUALITY, HOBBYIST PRICE"



www.martiauto.com
13238 W Butler Drive
El Mirage, AZ 85335
Phone (623) 935-2558
Fax (623) 935-2579

DELUXE MARTI REPORT



Proud to display this symbol

Copyright Kevin Marti 2021

Thank you for your interest in our services. We have determined the following information for your vehicle from the Ford Database we have:

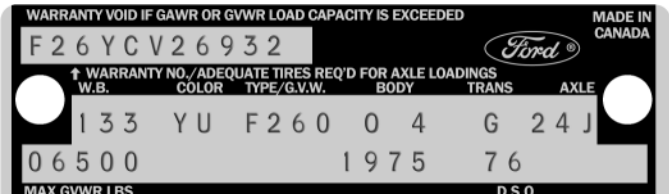
12345678901234567890123456789012345678901234567890123456789012345678901234567890
F26YCV26932133YU40 081 30H7669 BF3J3 G24JB3N5 A G 3 B 76G477 J

DOOR DATA PLATE INFORMATION

Serial Number **F26YCV26932**

F26 F-250 4x4 Pickup Truck
 Y 360-2V Engine
 C Built at Ontario
 V26932 Serial Number of this Ford Truck scheduled for production at Ontario

133 Wheelbase (inches)
 YU Baytree Green Paint, Ford #5402-A with Glen Green Paint, Ford #5404-A
 F260 F-250 4x4 Pickup 6500 Lb. GVW
 O 4 Green Cloth/Vinyl Ranger XLT Bench Seat / Styleside
 G Automatic Transmission
 24J 4.10 Dana 60 Conventional Rear Axle with Power Steering
 06500 Gross Vehicle Weight in Pounds
 1975 Model Year
 76 Denver DSO (District Sales Office)



IMPORTANT DATES

ORDER RECEIVED: **06/11/74**
 CAR SERIALIZED: **07/29/74**
 BUCKED: **08/27/74**
 SCHEDULED FOR BUILD: **08/30/74**
 ACTUALLY BUILT: **08/30/74**
 RELEASED: **09/03/74**
 SOLD: **09/26/74**

STATISTICS

Your vehicle was one of:

- 181** With these Paint Codes
- 12** With these Paint/Trim Codes
- 16,259** With these Engine/Transmission Codes
- 3,488** Ordered from this DSO
- 3,678** With Ranger XLT Package

For the 1975 F-250 4x4 Pickup Truck

ORDER TYPE: RETAIL
 DSO ITEM #: 7669
 DEALER #: 76G477
 BOBS FORD INC
 4TH & RUSSELL
 CRAIG CO 81625

Your vehicle was equipped with the following features:

- Ranger XLT Package
- Regular & Deluxe TuTone Paint
- Ammeter and Oil Pressure Gauges
- Power Steering
- 7.50x16-6 Ply Rated Black Sidewall Tires
- Mud & Snow Tread Tires
- Mud & Snow Tread Spare Tire & Wheel
- Omit Outside Mirrors
- AM Radio
- Reduced Noise Exhaust System
- Heavy Duty 70 Amp Battery
- Heavy Duty Rear Springs
- Auxiliary Rear Springs

Your vehicle was actually produced on August 30, 1974 -- on schedule.

Kevin Marti