

"CONCOURSE QUALITY, HOBBYIST PRICE"



www.martiauto.com
13238 W Butler Drive
El Mirage, AZ 85335
Phone (623) 935-2558
Fax (623) 935-2579

DELUXE MARTI REPORT



Proud to display this symbol

Copyright Kevin Marti 2021

Thank you for your interest in our services. We have determined the following information for your vehicle from the Ford Database we have:

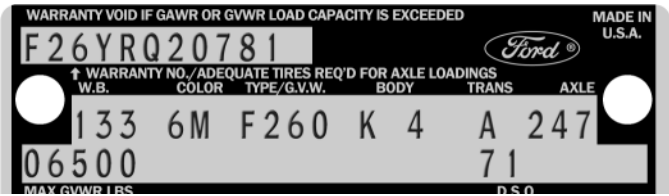
12345678901234567890123456789012345678901234567890123456789012345678901234567890
F26YRQ207811336M4K 082 12J8938 BG0J32 A24783 X6 F4 X 2 71D901 J

DOOR DATA PLATE INFORMATION

Serial Number **F26YRQ20781**

F26 F-250 4x4 Pickup Truck
 Y 360-2V Engine
 R Built at San Jose
 Q20781 Serial Number of this Ford Truck scheduled for production at San Jose

133 Wheelbase (inches)
 6M Bahama Blue Paint, Ford #5004-A with Wimbledon White Paint, Ford #1619-A
 F260 F-250 4x4 Pickup Truck 6500 Lb. GVW
 K 4 Blue Cloth/Vinyl Ranger XLT Bench Seat / Styleside
 A 4-Speed New Process Manual Transmission
 247 4.10 Dana 60 Conventional Rear Axle with Dana 6CF Front Axle
 06500 Gross Vehicle Weight in Pounds
 71 Los Angeles DSO (District Sales Office)



IMPORTANT DATES

ORDER RECEIVED: 07/11/72
 CAR SERIALIZED: 08/02/72
 BUCKED: 08/18/72
 SCHEDULED FOR BUILD: 09/12/72
 ACTUALLY BUILT: 09/15/72
 RELEASED: 09/24/72
 SOLD: 10/04/72

STATISTICS

Your vehicle was one of:

- 333** With these Paint Codes
- 14** With these Paint/Trim Codes
- 23,846** With these Engine/Transmission Codes
- 1,681** Ordered from this DSO
- 2,341** With Ranger XLT Package

For the 1973 F-250 4x4 Pickup Truck

ORDER TYPE: STOCK
 DSO ITEM #: 8938
 DEALER #: 71D901
 CARMENITA FORD TRK
 13443 E FREEWAY DR
 SANTA FE SPRINGS CA 90670

Your vehicle was equipped with the following features:

- Ranger XLT Package
- Regular and Deluxe TuTone Paint
- Ammeter & Oil Pressure Gauges
- Emission Control System
- Dana 6CF Front Axle
- 7.50x16-6 Ply Rated Black Sidewall Tires
- Junior Chrome Western Swing-Lock Mirrors
- Power Brakes
- Sliding Rear Window
- AM Radio
- Tinted Glass
- Super Cooling Radiator
- Heavy Duty Rear Springs

Your vehicle was actually produced on September 15, 1972 -- three days behind schedule.

Kevin Marti