

"CONCOURSE QUALITY, HOBBYIST PRICE"



www.martiauto.com
13238 W Butler Drive
El Mirage, AZ 85335
Phone (623) 935-2558
Fax (623) 935-2579

DELUXE MARTI REPORT



Proud to display this symbol

Copyright Kevin Marti 2021

Thank you for your interest in our services. We have determined the following information for your vehicle from the Ford Database we have:

12345678901234567890123456789012345678901234567890123456789012345678901234567890
F25YRB48100131 4H 4 1 22F7456 49502VEQF G24 K8 1 13324 M 3 74D443 1B 3

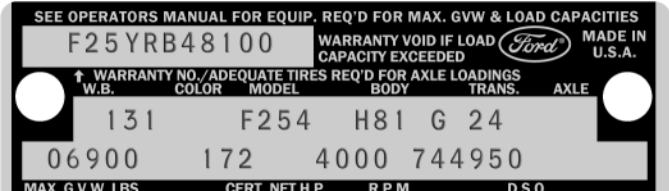
DOOR DATA PLATE INFORMATION

Serial Number **F25YRB48100**

F25 F-250 Truck
 Y 352-2V Engine
 R Built at San Jose
 B48100 Serial Number of this Ford Truck scheduled for production at San Jose

131 Wheelbase (inches)
 Special Paint

F254 F-250 Truck 6900 Lb. GVW
 H81 Beige Vinyl Ranger Bench Seat / Conventional
 G Automatic Transmission
 24 4.10 Dana 60 Conventional Rear Axle
 06900 Gross Vehicle Weight in Pounds
 172 Horsepower @
 4000 RPM
 744950 Seattle Ordering District under Paint or Tire Order # 4950



IMPORTANT DATES

ORDER RECEIVED: **05/31/67**
 CAR SERIALIZED: **06/09/67**
 BUCKED: **--**
 SCHEDULED FOR BUILD: **06/22/67**
 ACTUALLY BUILT: **06/23/67**
 RELEASED: **06/26/67**
 SOLD: **07/10/67**

STATISTICS

Your vehicle was one of:

- 10,055** With Special Paint
- 715** With Special Paint/Trim Codes
- 24,239** With these Engine/Transmission Codes
- 6,219** Ordered from this DSO
- 11,059** With Ranger Package

For the 1967 F-250 Truck

ORDER TYPE: RETAIL
 DSO ITEM #: 7456
 DEALER #: 74D443
 TEAGUE MOTOR COMPANY
 11 N COLVILLE
 WALLA WALLA WA 99362

Your vehicle was equipped with the following features:

- Ranger Package
- Heavy Duty Front Springs
- 7.50x16-6 Ply Rated Front Tires
- 7.50x16-8 Ply Rated Rear Tires
- Spare Tire
- Vacuum Booster Brakes
- Heavy Duty 55 Amp Alternator
- Deluxe Fresh Air Heater
- Manual AM Radio
- Tinted Glass
- 25 Gallon Frame Mounted Fuel Tank
- Heavy Duty Rear Springs
- Camper Special

Your vehicle was actually produced on June 23, 1967 -- one day behind schedule.

Kevin Marti