

"CONCOURSE QUALITY, HOBBYIST PRICE"



www.martiauto.com  
13238 W Butler Drive  
El Mirage, AZ 85335  
Phone (623) 935-2558  
Fax (623) 935-2579

### DELUXE MARTI REPORT



Proud to display this symbol

Copyright Kevin Marti 2020

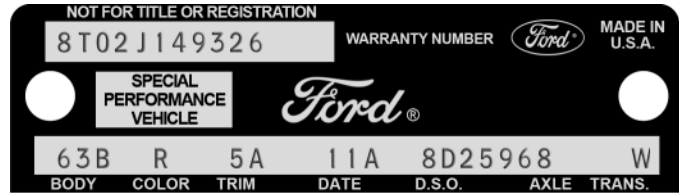
Thank you for your interest in our services. We have determined the following information for your vehicle from the Ford Database we have:

12345678901234567890123456789012345678901234567890123456789012345678901234567890  
8T02J149326 R 5A 1 11A1125 2596 KMBA W 5 E 6 D 32 B 1 7 84X999 B 2

#### DOOR DATA PLATE INFORMATION

Serial Number **8T02J149326-01125**  
 8 1968  
 T Built at Metuchen  
 02 Shelby 2-Door Fastback  
 J 302-4V V-8 Engine GT-350  
 149326 Serial Number of this Ford scheduled for production at Metuchen  
 1125 Shelby Unit Number scheduled for production

63B Shelby 2-Door Fastback  
 R Highland Green Paint, Ford #3067-A  
 5A Black Knit Vinyl Luxury Bucket Seats  
 11A Scheduled for build January 11, 1968  
 8D2596 Home Office Reserve Ordering District under Domestic Special Order # 2596  
 8 3.50 Conventional Rear Axle  
 W C-4 Select Shift Automatic Transmission



#### IMPORTANT DATES

ORDER RECEIVED: 12/20/67  
 CAR SERIALIZED: 01/03/68  
 BUCKED: 01/08/68  
 SCHEDULED FOR BUILD: 01/11/68  
 ACTUALLY BUILT: 01/11/68  
 RELEASED: 01/11/68  
 SOLD: --

#### STATISTICS

Your vehicle was one of:

- 520** With this Paint Code
- 356** With these Paint/Trim Codes
- 525** With these Engine/Transmission Codes
- 1,053** Ordered as Shelby GT-350s
- 224** With Hertz Rent-A-Racer

For the 1968 Shelby 2-Door Fastback

ORDER TYPE: RETAIL  
 DSO ITEM #: 1125  
 DEALER #: 71E037  
 ROBERT H LOUD  
 1365 E COLORADO  
 PASADENA CA 91101

Your vehicle was equipped with the following features:

- Shoulder Harness
- Hertz Rent-A-Racer
- Visibility Group
- Wheel Lip Moldings
- Sport Deck Rear Seat
- Power Disc Brakes
- Power Steering
- Tilt-Away Steering Wheel
- Air Conditioner - SelectAire
- AM Radio
- Interior Decor Group
- Tinted Glass
- Heavy Duty Battery
- Tachometer and Trip Odometer

Your vehicle was actually produced on January 11, 1968 -- on schedule.

Kevin Marti