

"CONCOURSE QUALITY, HOBBYIST PRICE"



www.martiauto.com  
13238 W Butler Drive  
El Mirage, AZ 85335  
Phone (623) 935-2558  
Fax (623) 935-2579

### DELUXE MARTI REPORT



Proud to display this symbol

Copyright Kevin Marti 2021

Thank you for your interest in our services. We have determined the following information for your vehicle from the Ford Database we have:

12345678901234567890123456789012345678901234567890123456789012345678901234567890  
F25ACD09308149 448325 26C7582 0409 TC F24 K8 3 3 B4 6662 2 0

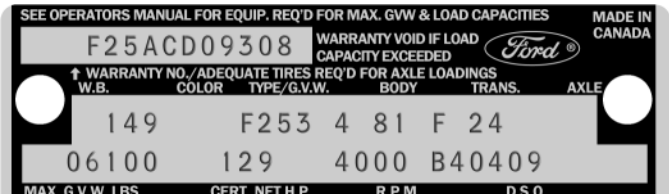
#### DOOR DATA PLATE INFORMATION

Serial Number **F25ACD09308**

F25 F-250 Truck  
 A 240-1V Engine  
 C Built at Ontario  
 D09308 Serial Number of this Ford Truck scheduled for production at Ontario

149 Wheelbase (inches)  
 Special Paint

F253 F-250 Truck 6100 Lb. GVW  
 4 81 Black Vinyl Bench Seat / Conventional  
 F Warner 4-Speed Manual Transmission  
 24 4.10 Dana 60 Conventional Rear Axle  
 06100 Gross Vehicle Weight in Pounds  
 129 Horsepower @  
 4000 RPM  
 B40409 Midwestern Canada Ordering District under Special Order # 0409



#### IMPORTANT DATES

ORDER RECEIVED: --  
 CAR SERIALIZED: 03/15/68  
 BUCKED: 03/20/68  
 SCHEDULED FOR BUILD: 03/26/68  
 ACTUALLY BUILT: 03/25/68  
 RELEASED: 03/29/68  
 SOLD: 04/08/68

#### STATISTICS

Your vehicle was one of:

- 8,927 With Special Paint
- 434 With Special Paint/Trim Codes
- 4,688 With these Engine/Transmission Codes
- 378 Ordered from this DSO
- 1,782 With 400 Watt Immersion Heater

For the 1968 F-250 Truck

ORDER TYPE: FLEET  
 DSO ITEM #: 7582  
 DEALER #: B4 666  
 GREAT PLAINS FORD SALES LTD  
 WEYBURN SASK CAN

Your vehicle was equipped with the following features:

- Crew Cab Option
- 400 Watt Immersion Heater
- 7.50x16-8 Ply Rated Rear Tires
- 7.50x16-6 Ply Rated Front Tires
- Heavy Duty 70 Amp Battery
- Heavy Duty Rear Springs

Your vehicle was actually produced on March 25, 1968 -- one day ahead of schedule.

Kevin Marti