

"CONCOURSE QUALITY, HOBBYIST PRICE"



www.martiauto.com  
13238 W Butler Drive  
El Mirage, AZ 85335  
Phone (623) 935-2558  
Fax (623) 935-2579

### DELUXE MARTI REPORT



Proud to display this symbol

Copyright Kevin Marti 2020

Thank you for your interest in our services. We have determined the following information for your vehicle from the Ford Database we have:

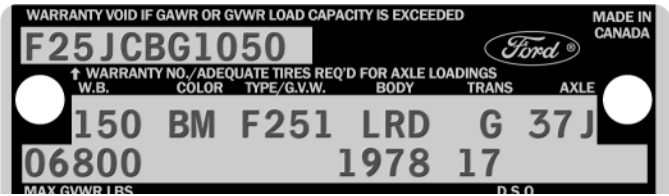
12345678901234567890123456789012345678901234567890123456789012345678901234567890  
F25JCBG1050150BMDLR1Z1 01B1559 UL1C RG37J43N 526 H2 5 17B02385B

#### DOOR DATA PLATE INFORMATION

Serial Number **F25JCBG1050**

F25 F-250 Regular Pickup Truck  
 J 460-4V Engine  
 C Built at Ontario  
 BG1050 Serial Number of this Ford Truck scheduled for production at Ontario

150 Wheelbase (inches)  
 BM Dark Jade Metallic Paint, Ford #5328-A with Wimbledon White Paint, Ford #1619-A  
 F251 F-250 Regular Pickup Truck 6800 Lb. GVW  
 LRD Jade Vinyl Ranger XLT Bench Seat / Crew Cab Styleside  
 G Automatic Transmission  
 37J 3.54 Dana 60 Conventional Rear Axle with Power Steering  
 06800 Gross Vehicle Weight in Pounds  
 1978 Model Year  
 17 Washington DSO (District Sales Office)



#### IMPORTANT DATES

ORDER RECEIVED: 11/30/77  
 CAR SERIALIZED: 01/17/78  
 BUCKED: 02/06/78  
 SCHEDULED FOR BUILD: 02/01/78  
 ACTUALLY BUILT: 02/10/78  
 RELEASED: 03/01/78  
 SOLD: 03/31/78

#### STATISTICS

Your vehicle was one of:

- 704 With these Paint Codes
- 26 With these Paint/Trim Codes
- 16,102 With these Engine/Transmission Codes
- 2,580 Ordered from this DSO
- 4,768 With Crew Cab Option

For the 1978 F-250 Regular Pickup Truck

ORDER TYPE: RETAIL  
 DSO ITEM #: 1559  
 DEALER #: 17B023  
 PALMER FORD INC  
 5520 JAMESTOWN RD  
 HYATTSVILLE MD 20782

Your vehicle was equipped with the following features:

- Crew Cab Option
- Regular and Deluxe TuTone Paint
- Sliding Rear Window
- Power Steering
- 8.00x16.5-10 Ply Rated Black Sidewall Tires
- Mud & Snow Tread Tires
- Air Conditioner
- AM/FM Stereo Radio
- Tinted Glass
- Auxiliary Oil Cooler
- Standard and Heavy Duty 68 Amp Dual Batteries
- Aft Fuel Tank w/Standard Tank
- Chrome Rear Step Bumper
- Ranger XLT Package

Your vehicle was actually produced on February 10, 1978 -- nine days behind schedule.

Kevin Marti