

"CONCOURSE QUALITY, HOBBYIST PRICE"



www.martiauto.com
13238 W Butler Drive
El Mirage, AZ 85335
Phone (623) 935-2558
Fax (623) 935-2579

DELUXE MARTI REPORT



Proud to display this symbol

Copyright Kevin Marti 2021

Thank you for your interest in our services. We have determined the following information for your vehicle from the Ford Database we have:

12345678901234567890123456789012345678901234567890123456789012345678901234567890
F26YRC53238133A 4DA2 2 09F2620 3E8F228AB4J45 7 0 63 3 0 71B0552 F

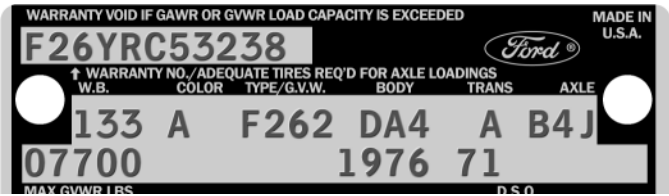
DOOR DATA PLATE INFORMATION

Serial Number **F26YRC53238**

F26 F-250 4x4 Pickup Truck
 Y 360-2V Engine
 R Built at San Jose
 C53238 Serial Number of this Ford Truck scheduled for production at San Jose

133 Wheelbase (inches)
 A Raven Black Paint, Ford #1724-A
 F262 F-250 4x4 Pickup Truck 7700 Lb. GVW
 DA4 Black Knit Vinyl Custom Bench Seat / Styleside
 A 4-Speed New Process Manual Transmission
 B4J 4.10 Dana 60 Limited Slip Rear Axle with Power Steering

07700 Gross Vehicle Weight in Pounds
 1976 Model Year
 71 Los Angeles DSO (District Sales Office)



IMPORTANT DATES

ORDER RECEIVED: 05/03/76
 CAR SERIALIZED: 05/20/76
 BUCKED: 06/05/76
 SCHEDULED FOR BUILD: 06/09/76
 ACTUALLY BUILT: 06/08/76
 RELEASED: 06/08/76
 SOLD: 07/01/76

STATISTICS

Your vehicle was one of:

- 5,605 With this Paint Code
- 1,068 With these Paint/Trim Codes
- 39,319 With these Engine/Transmission Codes
- 2,532 Ordered from this DSO
- 46,319 With Custom Package

For the 1976 F-250 4x4 Pickup Truck

ORDER TYPE: STOCK
 DSO ITEM #: 2620
 DEALER #: 71B055
 JIM SNOW FORD
 18900 STUDEBAKER
 CERRITOS CA 90701

Your vehicle was equipped with the following features:

- Custom Package
- Ammeter & Oil Gauges
- California Emissions System
- Tool Stowage Box
- Reduced Noise Exhaust System
- Power Steering
- 8.75x16.5-10 Ply Rated Black Sidewall Tires
- Bright Western Low-Mount Swing Lock Mirrors
- Bright Bodyside Moldings
- Tinted Glass
- Free Running Front Hubs
- Extra Cooling Radiator
- Tie-Down Hooks
- Rear Step Bumper

Your vehicle was actually produced on June 8, 1976 -- one day ahead of schedule.

Kevin Marti