

"CONCOURSE QUALITY, HOBBYIST PRICE"



www.martiauto.com  
13238 W Butler Drive  
El Mirage, AZ 85335  
Phone (623) 935-2558  
Fax (623) 935-2579

### DELUXE MARTI REPORT



Proud to display this symbol

Copyright Kevin Marti 2020

Thank you for your interest in our services. We have determined the following information for your vehicle from the Ford Database we have:

12345678901234567890123456789012345678901234567890123456789012345678901234567890  
F26YRX41758133 4MR2 2 07G0549 8877B3F9G3 G24PB5 1 X TYB4 1 6 74H4942 G 3

#### DOOR DATA PLATE INFORMATION

Serial Number **F26YRX41758**

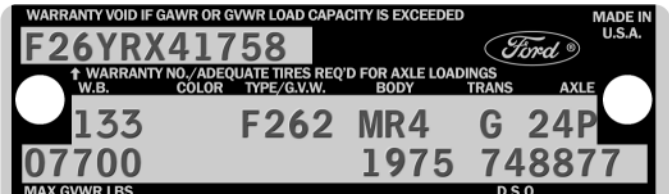
F26 F-250 4x4 Pickup Truck  
 Y 360-2V Engine  
 R Built at San Jose  
 X41758 Serial Number of this Ford Truck scheduled for production at San Jose

133 Wheelbase (inches)  
 Special Paint

F262 F-250 4x4 Pickup 7700 Lb. GVW  
 MR4 Black Super Soft Vinyl Ranger XLT Bench Seat / Styleside

G Automatic Transmission  
 24P 4.10 Dana 60 Conventional Rear Axle with Dana 3550 Lb. Front Axle&Power Steering

07700 Gross Vehicle Weight in Pounds  
 1975 Model Year  
 748877 Seattle Ordering District under Paint or Tire Order # 8877



#### IMPORTANT DATES

ORDER RECEIVED: 06/03/75  
 CAR SERIALIZED: 06/18/75  
 BUCKED: 07/07/75  
 SCHEDULED FOR BUILD: 07/07/75  
 ACTUALLY BUILT: 07/08/75  
 RELEASED: 07/09/75  
 SOLD: 08/15/75

#### STATISTICS

Your vehicle was one of:

- 1,796 With Special Paint
- 9 With Special Paint/Trim Codes
- 16,259 With these Engine/Transmission Codes
- 4,515 Ordered from this DSO
- 3,678 With Ranger XLT Package

For the 1975 F-250 4x4 Pickup Truck

ORDER TYPE: STOCK  
 DSO ITEM #: 0549  
 DEALER #: 74H494  
 DON JOHNSTON FORD INC

ABERDEEN WA 98520

Your vehicle was equipped with the following features:

- Ranger XLT Package
- Ammeter and Oil Pressure Gauges
- Power Steering
- Dana 3550 Lb. Front Axle
- 7.50x16-10 Ply Rated Black Sidewall Tires
- Spare Tire & Wheel
- Chrome Western Swing-Lock Low Mount Mirrors
- Vinyl Bodyside Moldings
- AM Radio
- Tinted Glass
- Dual Electric Horns
- Heavy Duty Front Shocks
- Heavy Duty Rear Shocks
- Rear Step Bumper

Your vehicle was actually produced on July 8, 1975 -- one day behind schedule.

Kevin Marti