

"CONCOURSE QUALITY, HOBBYIST PRICE"



www.martiauto.com
13238 W Butler Drive
El Mirage, AZ 85335
Phone (623) 935-2558
Fax (623) 935-2579

DELUXE MARTI REPORT



Proud to display this symbol

Copyright Kevin Marti 2021

Thank you for your interest in our services. We have determined the following information for your vehicle from the Ford Database we have:

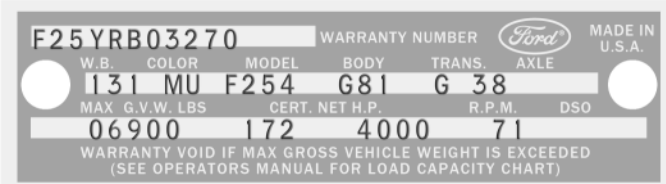
12345678901234567890123456789012345678901234567890123456789012345678901234567890
F25YRB03270131MU4G 4 2 27C8287 28C3D 2G38 K8 1 3324 C L 3 71D092 1B

DOOR DATA PLATE INFORMATION

Serial Number **F25YRB03270**

F25 F-250 Truck
 Y 352-2V Engine
 R Built at San Jose
 B03270 Serial Number of this Ford Truck scheduled for production at San Jose

131 Wheelbase (inches)
 MU Wimbledon White Paint, Ford #1619-A with Lunar Green Paint, Ford #2097-A
 F254 F-250 Truck 6900 Lb. GVW
 G81 Green Vinyl Ranger Bench Seat / Conventional
 G Automatic Transmission
 38 3.73 Dana 60 Conventional Rear Axle
 06900 Gross Vehicle Weight in Pounds
 172 Horsepower @
 4000 RPM
 71 Los Angeles DSO (District Sales Office)



IMPORTANT DATES

ORDER RECEIVED: **03/08/67**
 CAR SERIALIZED: **03/10/67**
 BUCKED: **--**
 SCHEDULED FOR BUILD: **03/27/67**
 ACTUALLY BUILT: **03/30/67**
 RELEASED: **04/03/67**
 SOLD: **04/21/67**

STATISTICS

Your vehicle was one of:

- 1,862** With these Paint Codes
- 583** With these Paint/Trim Codes
- 24,239** With these Engine/Transmission Codes
- 9,611** Ordered from this DSO
- 11,059** With Ranger Package

For the 1967 F-250 Truck

ORDER TYPE: STOCK
 DSO ITEM #: 8287
 DEALER #: 71D092
 SMITH FORD CO
 12801 BROOKHURST
 GARDEN GROVE CA 92640

Your vehicle was equipped with the following features:

- Ranger Package
- Heavy Duty Front Springs
- Deluxe Tutone Paint
- 7.50x16-8 Ply Rated Rear Tires
- 7.50x16-6 Ply Rated Front Tires
- Spare Tire
- Heavy Duty 55 Amp Alternator
- Deluxe Fresh Air Heater
- Manual AM Radio
- Tinted Glass
- Closed Crankcase Emission System
- 25 Gallon Frame Mounted Fuel Tank w/Standard Tank
- Heavy Duty Rear Springs
- Camper Special

Your vehicle was actually produced on March 30, 1967 -- three days behind schedule.

Kevin Marti